

Direct Link Race Performance

This ECU/ECM mapping and tuning product is ideal for any size workshop or dealer. The

Direct Link Pro Software provides the user with a means of modifying the fuel-injection pulse-width, spark timing and other calibration values into the flash memory of the ECU/ECM and maximizes the performance of any fuel-injected race or street bike.

Other parameters are also adjustable by editing the look-up table data. Data monitor & data logging capabilities are used to fine-tune the bike by analyzing numerous engine parameters. An optional WO2 controller for each cylinder can further help the tuner to achieve maximum results.

This ECU/ECM mapping and tuning tool works on the following Bike manufactures:

Harley-Davidson,
Buell, GASGAS, Sherco, Moto-
Guzzi, Ducati, & Piaggio



Main Features

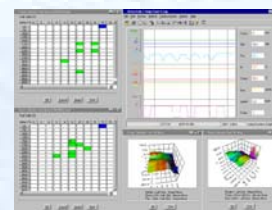
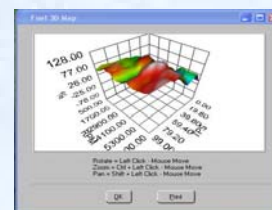
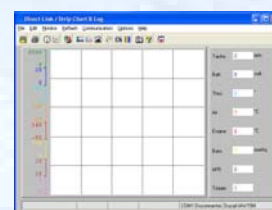
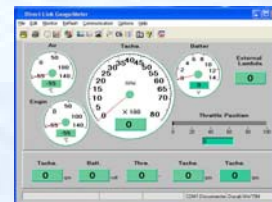
- Re-flash calibrations maps via serial programming into the ECU.
- Modify the following tables: front & rear cylinder fuel & spark table, AFR, Warm-up,
- Cranking, Idle, Acceleration, Rev-limiter, and more.
- Auto tuning
- Fuel & Spark table real time cell tracing (displays your current location on map tables making it even easier to make a map)
- Option to simultaneously modify both front and rear spark & fuel tables
- View data using Strip Chart or Gauge/Meter format
- Data logger feature: Automatic or Manual modes.
- Alternate data capture positions: start/middle/end
- User-friendly toolbar buttons: Gauge Monitor, Strip Chart Monitor, Log View, etc.
- Logged or real-time data (RPM, TPS, PWM, O2 Sensor, etc)
- Graph/Trace color settings
- External Lambda sensor
- Interfaces with GasAnalyzer
- Interfaces with Wideband OxygenSensor Controllers such as :
 - Wego II & Wego III (Daytona Twintec),
 - LM-1 & LC-1 (Innovate Motorsports)
 - AFM-1000 (Engine Control & Monitoring)
 - M300 (PLX-Devices))
 - SM-AFR (PLX-Devices)
 - Uego (AEM)
 - Wideband Commander (Dynojet)
- Runs on Microsoft® Windows™ Vista/XP/2000/NT/Me/98
- English or Metric units.

Supported ECU:

MM-IAW15RC, 15P, 15M, 26H- HD Delphi, Buell VDO

Software package:

- Case
- CD ROM (Software and Manuals)
- Communication cables
- Hardware Key for USB Port



Via Tonino Gualtieri, 1
42100 Reggio Emilia
Tel +39 0522361134
Fax +39 0522360806
Internet: www.cf3000.it
e-mail: cf3000@cf3000.it